

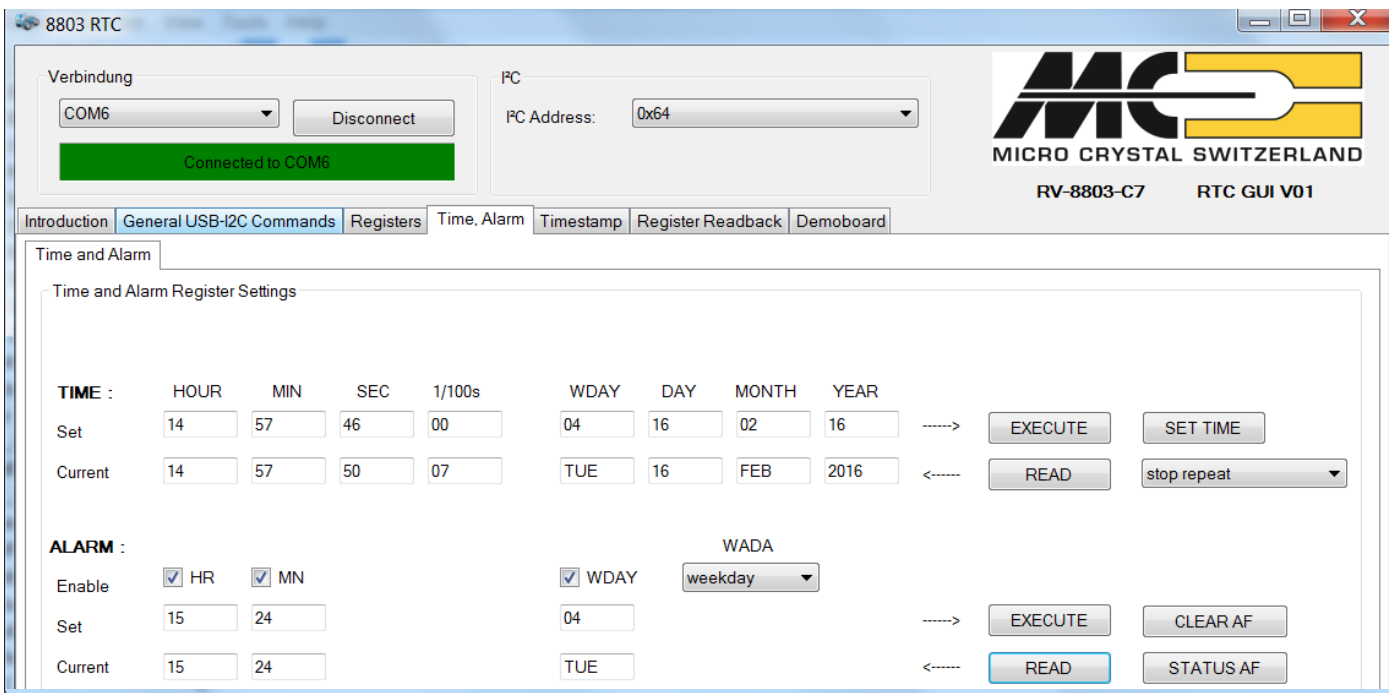


The RV-8803-C7 is a high accuracy, ultra low power Real-Time-Clock Module with embedded 32.768 kHz Crystal. High accuracy, high stability is achieved by factory calibrated, temperature compensated DTCXO and results in time-accuracy of  $\pm 3.0$  ppm across the temperature range from  $-40^{\circ}\text{C}$  to  $+85^{\circ}\text{C}$ . Standard Clock & Calendar are integrated together with Timer, Alarm and Time-stamp functions. It interfaces through the industry standard I<sup>2</sup>C-Bus interface. RV-8803-C7 offers smallest package and lowest current consumption (240 nA, 3.2\*1.5\*0.8 mm)

### Description:

The evaluation kit simplifies the system design. The RTC functions can be directly evaluated and tested. The kit has 3 parts:

- Dongle to establish the Interface between the USB-port of the PC and the I<sup>2</sup>C-Bus
- The development board RV-8803-C7. All components including the tiny RTC package and a row of pins are preassembled
- The Graphical User Interface (GUI) is ready for download.

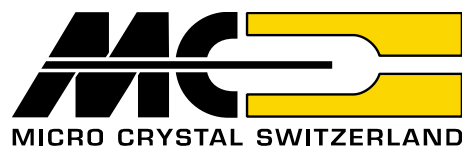
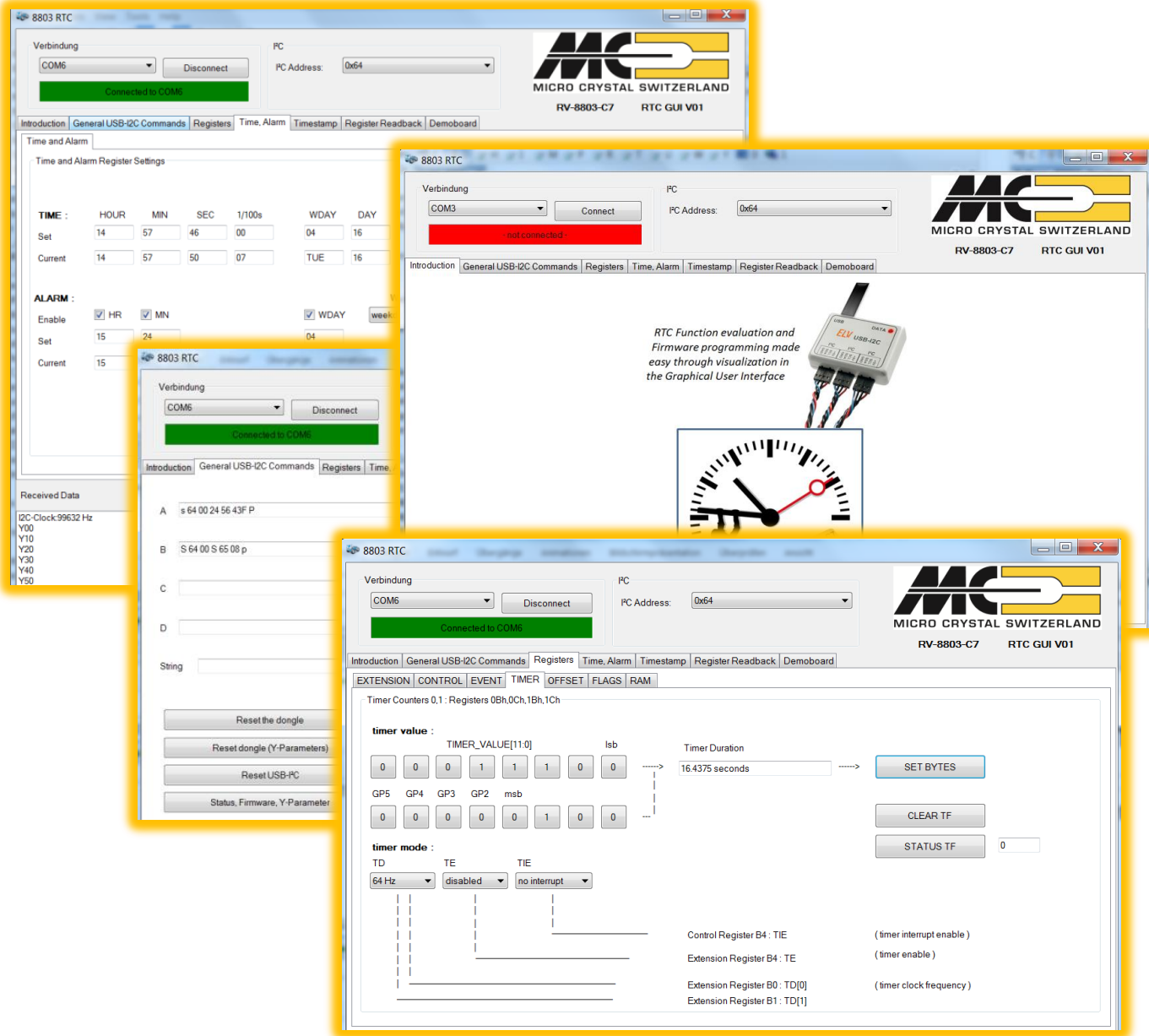


# Graphical User Interface:

## Software

The software control via the GUI allows a fast start to communicate with the Real-Time Clock via I<sup>2</sup>C-Bus. Every register is directly decoded and visualized. All the functions, e.g. setting / reading the actual time can be interactively accessed.

Aside from the detailed GUI pages for the Real-Time Clocks, a General USB-I<sup>2</sup>C Commands page allows communication with any I<sup>2</sup>C-bus RTC by directly entering the hex codes.



Micro Crystal AG  
Muehlestrasse 14  
CH-2540 Grenchen  
Switzerland

Tel. +41 32 655 82 82  
Fax. +41 32 655 82 83  
sales@microcrystal.com  
www.microcrystal.com